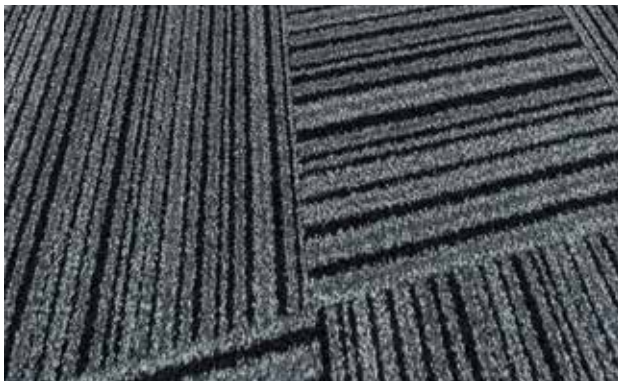
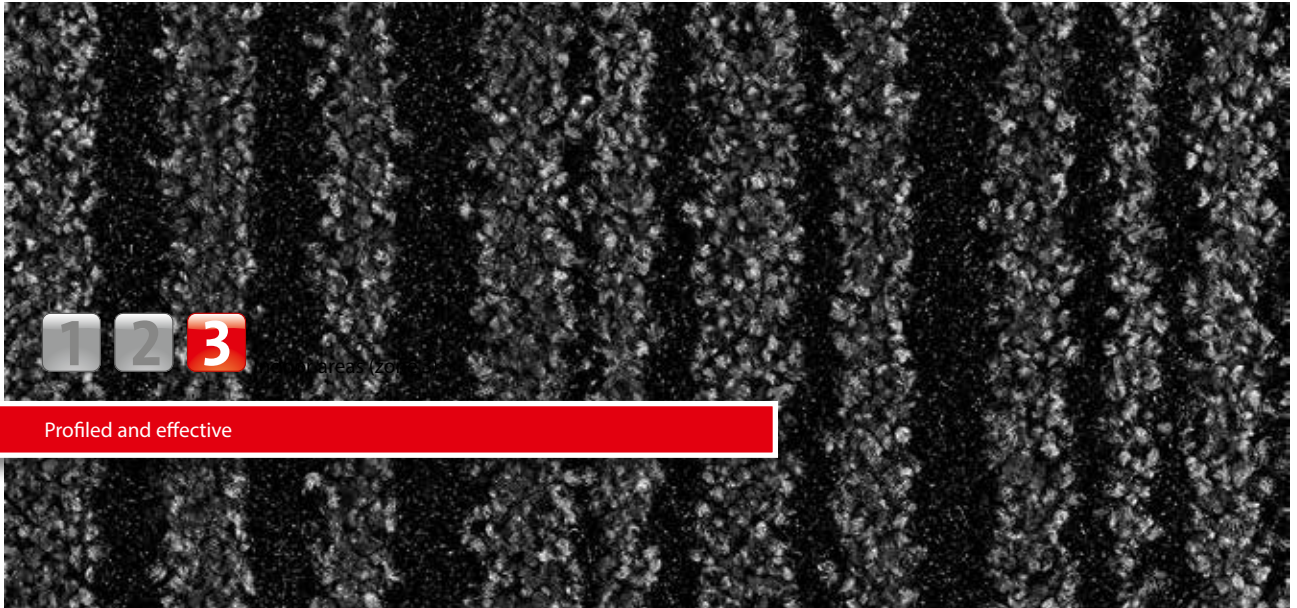


Model SCRATCH2



Description

emco SCRATCH2 fulfils a dual function by means of a new type of material combination: Coarse dirt is brushed off and moisture is absorbed in the best possible way. Up to 90% less dirt is carried into the interior. This ensures that the value of your carpet, parquet flooring or stone floor is effectively retained. An investment that pays for itself: emco SCRATCH2 saves up to 65% of cleaning costs. In order to benefit from the maximum clean-off effect, emco SCRATCH2 should be laid with the rows running at right angles to the direction in which people will walk across it.



Anti-static



DS (EN 13893)



Resistant strength



Bfl-s1



High



Highly suitable for property

Clean-off system

Model SCRATCH2

Construction	Tufting-Velours 1/8"
Pile above substrate	100% polyamide ECONYL
Substrate material	Polyester fleece
Backing material	Heavy coating
Pile weight / fibre weight	750
Total weight (g/m²)	3.550
Overall height (mm)	8
Tuft density/m²	116.000
Slip resistance	DS (EN 13893)
Certificates	CE conformity EN 14041 (rolls only)
Supplied as rolls	200 cm wide (incl. border)

Product characteristics	Soiling and moisture absorption
Laying	Individual rolls or smaller coverings can be laid loose on any smooth floor. For larger areas, and allowing for on-site conditions, we recommend fixed laying with an adhesive suitable for plasticised PVC.
Cleaning	Dirt removal with powerful brush vacuum cleaner. The spray extraction process is recommended for periodic basic cleaning. Cleaning with plenty of water is absolutely no problem, water temperature should not be above 40°C. Do not use chlorinated hydrocarbon (Tetra).
Brand	emco

Clean-off system

Model SCRATCH2

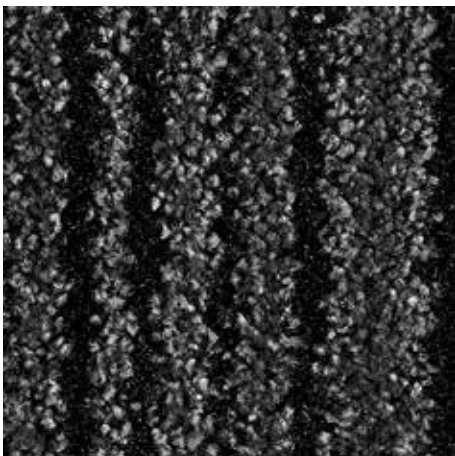
Colours



40.11 black



40.12 anthracite



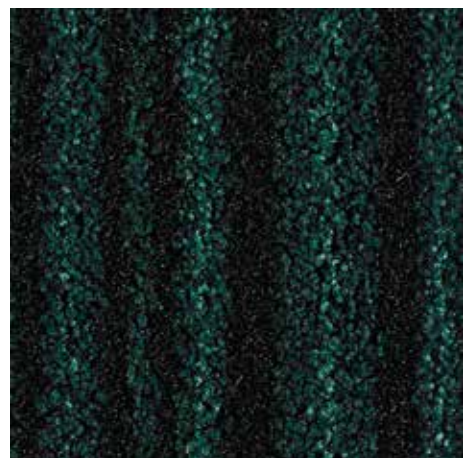
40.13 grey



40.14 brown



40.15 beige



40.16 petrol

Subject to technical modifications

emco Bautechnik GmbH · Memeler Straße 30 · D-42781 Haan · Germany · Tel.:
+49 (0)21 29/34 75 80 · Telefax: +49 (0)21 29/34 75 810 · E-Mail: sauberlauf@
emco.de · www.emco-bau.com

EMCO